

CENTER	
FOR	
COURT	
INNOVATION	

Tackling Methamphetamine with Healing to Wellness Courts

Sarah Reckess
Senior Associate, Tribal Justice Exchange
Center for Court Innovation

CENTER	
FOR	
COURT	
INNOVATION	

Center for Court Innovation

Demonstration Projects Technical Assistance

Goals:

- Reduce Crime
- Aid Victims
- Strengthen Communities
- Improve Public Trust in Justice

CENTER	<h2>Types of Problem-Solving Courts</h2> <ol style="list-style-type: none">1) <u>Therapeutic Models</u>:<ul style="list-style-type: none">• Healing to Wellness courts• Community courts• Family Treatment courts• Veterans courts• Youth courts2) <u>Accountability Models</u>:<ul style="list-style-type: none">• Domestic Violence courts• Sex Offense courts
FOR	
COURT	
INNOVATION	

CENTER	<h2>Why Problem-Solving Courts?</h2> <ol style="list-style-type: none">1. Collaboration2. Community engagement3. Individualized justice4. Enhanced information5. Accountability
FOR	
COURT	
INNOVATION	


CENTER	Overview
FOR	
COURT	
INNOVATION	
	Methamphetamine: a Game Changer in communities
	<ul style="list-style-type: none">• Effect on tribal communities?• How are tribes addressing meth addiction?

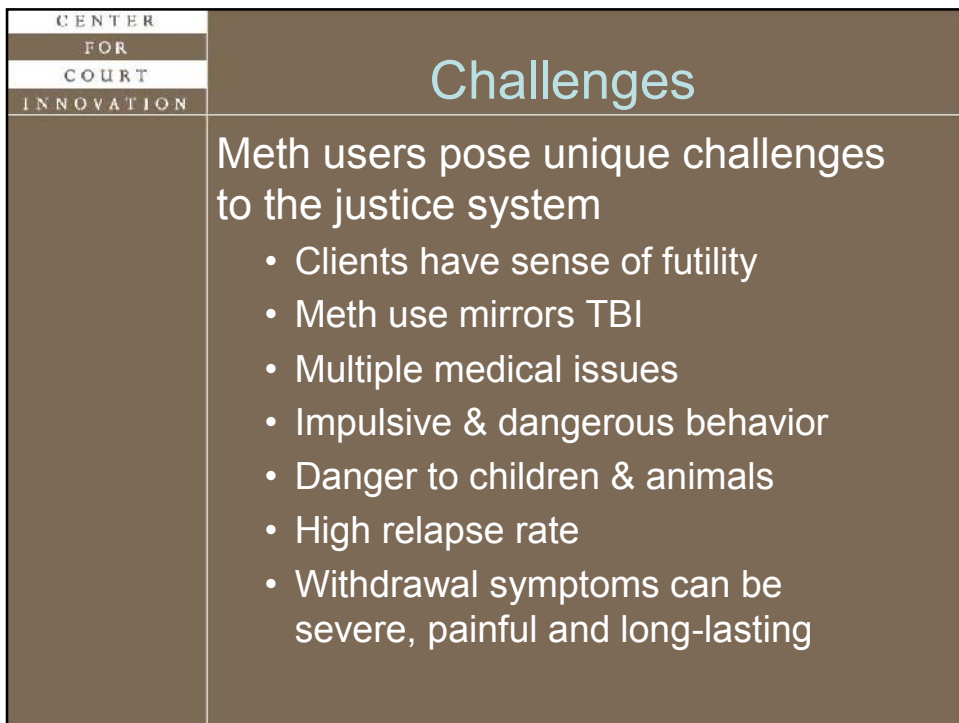
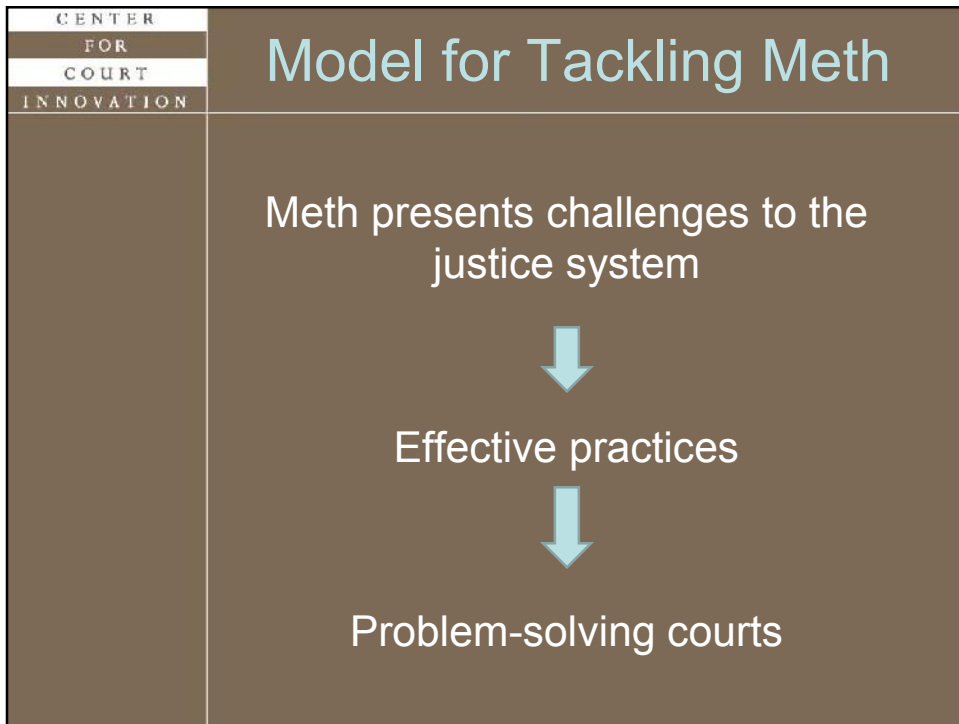
CENTER	Overview
FOR	
COURT	
INNOVATION	
	<ul style="list-style-type: none">•Meth presents special challenges to the justice system•There ARE effective ways to address meth addiction•Problem-solving courts can help you do it

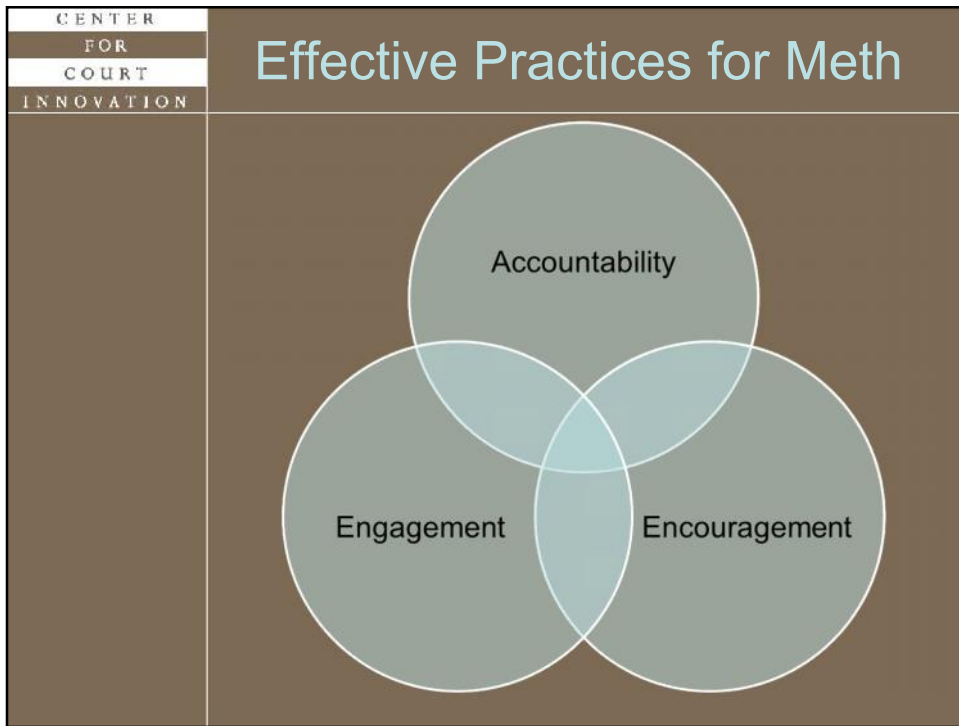
CENTER	<h2>Meth on Tribal Land</h2> <ul style="list-style-type: none">• Supply and Demand• Public Safety: “The greatest threat to the community”• 40% of violent crimes linked to meth• Indian lands targeted by drug cartels
FOR	
COURT	
INNOVATION	

CENTER	<h2>Meth on Tribal Land cont'd.</h2> <ul style="list-style-type: none">• Affecting quality of life for entire community• Low recovery rate• Tension over who should address the needs of meth users• Young female users
FOR	
COURT	
INNOVATION	

CENTER FOR COURT INNOVATION	<h2>How are Tribes Responding?</h2> <div style="display: flex; justify-content: space-around;"> <div style="text-align: center;">  <p>Real Warriors TRIBAL POLICE are Fighting Meth</p> </div> <div style="text-align: center;">  <p>METH SUCKS Meth niini Ksahan TIFYE? LU MEAH</p> </div> </div> <div style="display: flex; justify-content: space-around; margin-top: 20px;"> <div style="text-align: center;">  <p>JUST LIKE WINTER, METH IS HERE</p> </div> <div style="text-align: center;">  <p>COEUR D'ALENE TRIB WELI METH</p> </div> </div>
--------------------------------------	--

CENTER FOR COURT INNOVATION	<h2>How are Tribes Responding?</h2> <ul style="list-style-type: none"> • Education • AI/AN-Specific Treatment Programs • Collaborations with other Tribes/ State/ Feds • Cultural Responses <div style="text-align: center; margin-top: 20px;">  </div>
--------------------------------------	---





- | | |
|------------|------------------------------|
| CENTER | Effective Practices for Meth |
| FOR | |
| COURT | |
| INNOVATION | |
- Highly intensive supervision by court, probation, and police
 - Increased court appearances for first 90 days
 - Evidence-based treatment services that are longer (18 + mos) and targeted to the meth-addicted population

CENTER	Effective Practices cont'd.
FOR	
COURT	
INNOVATION	
	<ul style="list-style-type: none">• Behavior modification• Case management must advocate and facilitate medical care• Intensive case management services<ul style="list-style-type: none">- 2 Case Manager Model- 24/7 availability to addict

CENTER	Effective Practices cont'd.
FOR	
COURT	
INNOVATION	
	<h3>Mental Health Specialists</h3> <ul style="list-style-type: none">• Include early in treatment process• Distinguish between drug-induced and pre-drug abuse mental health issues• Address psychotherapeutic needs and use medications as appropriate

CENTER	Effective Practices cont'd.
FOR	
COURT	
INNOVATION	
	<h3>Medical Concerns</h3> <ul style="list-style-type: none">• Traumatic Brain Injury (TBI)• Basic health care<ul style="list-style-type: none">• Malnutrition• Dental care• Prenatal care• Increased risk of stroke, heart failure, collapsed blood vessels

CENTER	Effective Practices cont'd.
FOR	
COURT	
INNOVATION	
	<h3>Additional Strategies:</h3> <ul style="list-style-type: none">•Mentors or alumni supports•Structured social activities•Family wrap-around services•Education/ employment

CENTER FOR COURT INNOVATION	<h2>Effective Practices cont'd.</h2> <p>Additional Strategies:</p> <ul style="list-style-type: none">•Continuing care services for after program participation•Brain exercises & physical exercise•UA's must be frequent, random, comprehensive & observed
--------------------------------------	--

CENTER FOR COURT INNOVATION	<h2>AI/AN, Meth & the Courts</h2> <p>How do you take these effective practices and tailor them to tribal community?</p> <p>Find or develop programs that address:</p> <ul style="list-style-type: none">– Family/ Clan– Traditional Healing– Identity
--------------------------------------	---

CENTER	<h2>Family/Clan</h2> <p>Tailor your meth program to include:</p> <ul style="list-style-type: none">•Family participation•Family treatment•Visitation•Reconnection with family•Elders
FOR	
COURT	
INNOVATION	

CENTER	<h2>Traditional Healing</h2> <ul style="list-style-type: none">• Innovative court sanctions and incentives• Immersion in traditional healing practices• Collaboration between trad'l healers and Western medicine/mental health services
FOR	
COURT	
INNOVATION	

CENTER	<h1>Identity</h1> <ul style="list-style-type: none"> • PERCS Identifiers <ul style="list-style-type: none"> • <u>P</u>olitical – land & treaty rights • <u>E</u>thnic – sense of shared heritage • <u>R</u>acial – blood quantum issues • <u>C</u>ultural – tribal values and language • <u>S</u>piritual – sacred sites, religious freedom • Enculturation • Historical Trauma programs
FOR	
COURT	
INNOVATION	

CENTER	<h1>Specific Challenges</h1> <ul style="list-style-type: none"> • Community may be small/closed • Criminal jurisdiction/ PL-280 • No collaboration or info-sharing • Lack of services & resources • Lack of culturally-specific interventions • Political/ tribal council resistance • Sustainability
FOR	
COURT	
INNOVATION	

CENTER
FOR
COURT
INNOVATION

Next Steps? Questions?

Thank you!

Sarah Reckess
Center for Court Innovation
sreckess@courtinnovation.org
(315) 266-4332